

Modellname:
Nazwa modelu:

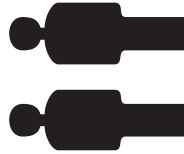
DOVER

Modellreihe:
Numer modelu:

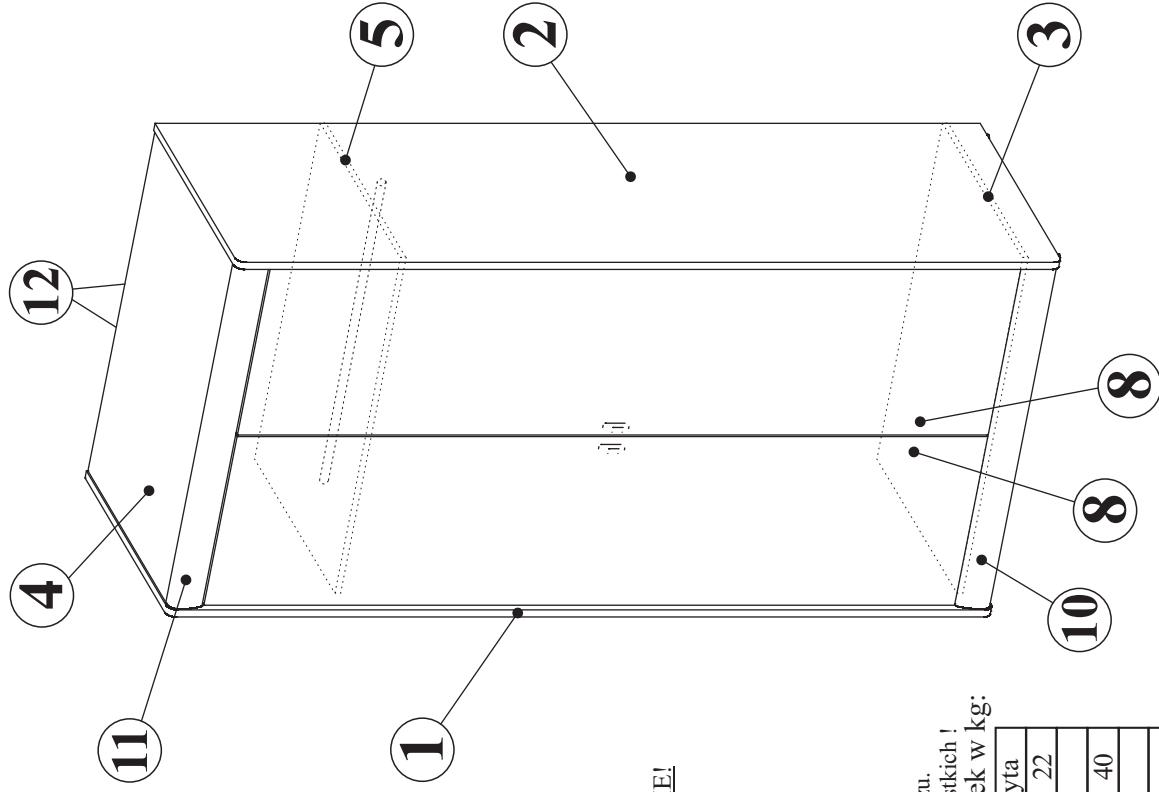
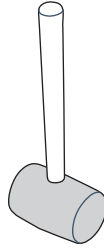
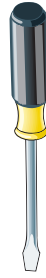
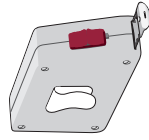
SL -- 08

Type:
Typ:

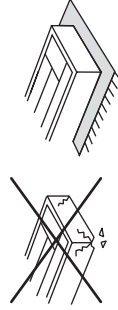
Blatt Nr **1** von: **5**
Strona z:



2 Personen
2 Osoby



**MONTOWAĆ
NA ROZŁOŻONYM KARTONIE!**

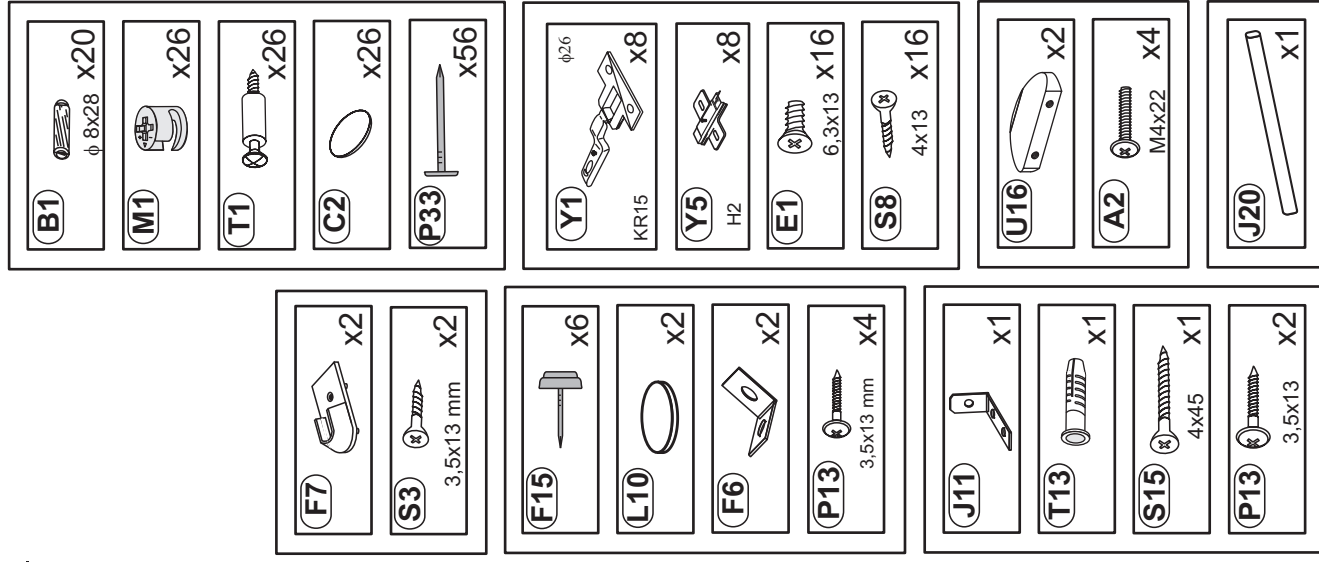


**Wskazówka dotycząca
pielęgnacji!**

Proszę czyścić tylko suchą
lub lekko wilgotną szmatką do kurzu.
Nie używać żadnych środków szorstkich!
Maksymalne obciążenie półek w kg:

Stärke/Gr.	Spanplatte/Plyta
Länge/Dł. [mm]	15 18 22
0<400	
401<600	40 40 40
601<800	24
801<1000	15 30

MONTAGEANLEITUNG INSTRUKCJA MONTAŻOWA



Modellname:
Nazwa modelu:

DOVER

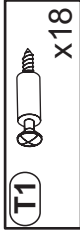
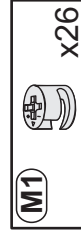
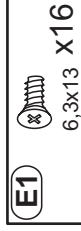
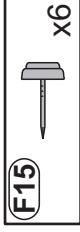
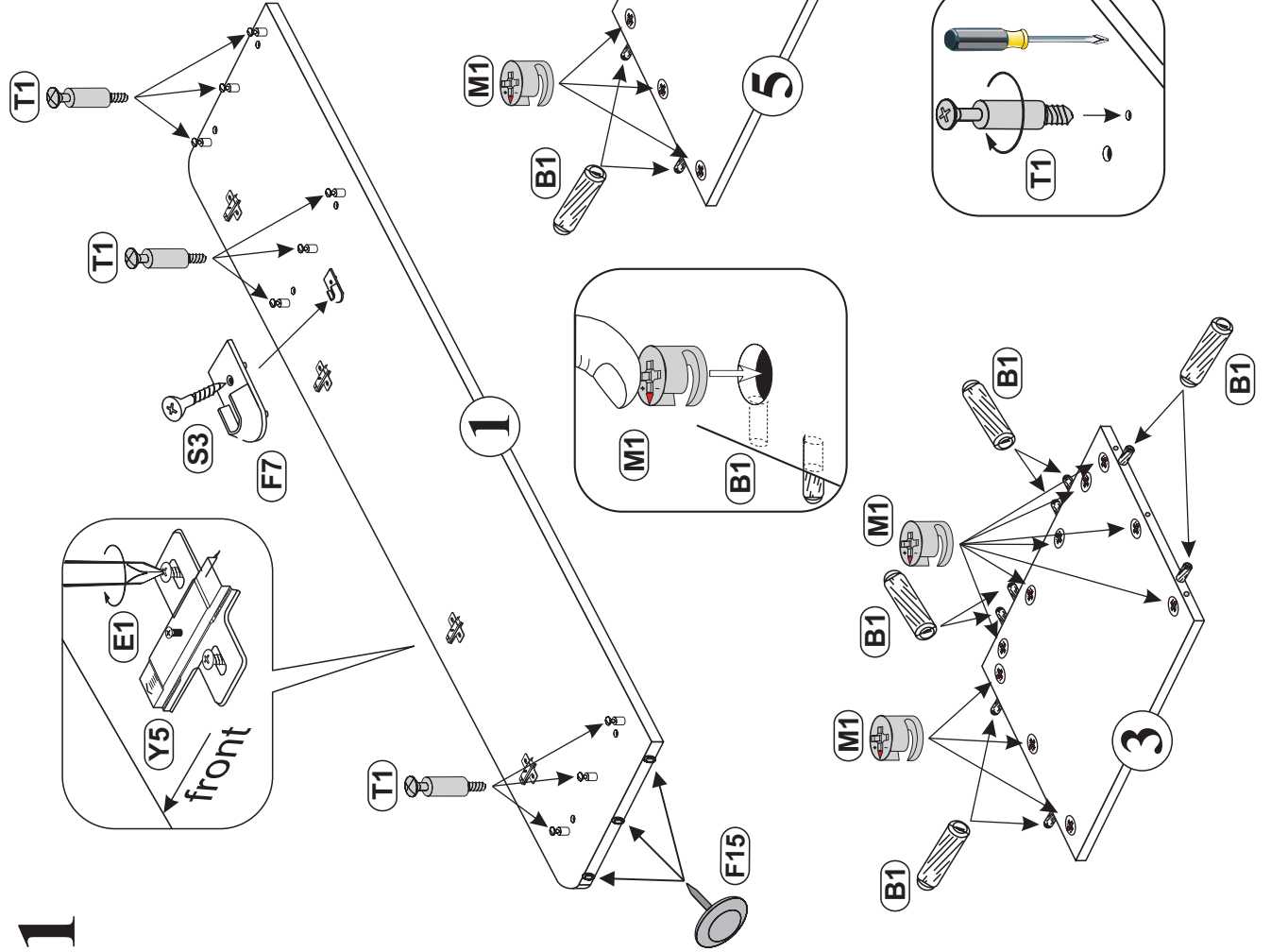
Modellreihe:
Numer modelu:

SL -- 08

Type: **22**
Typ:

Blatt Nr **2** von: **5**
Strona z:

1



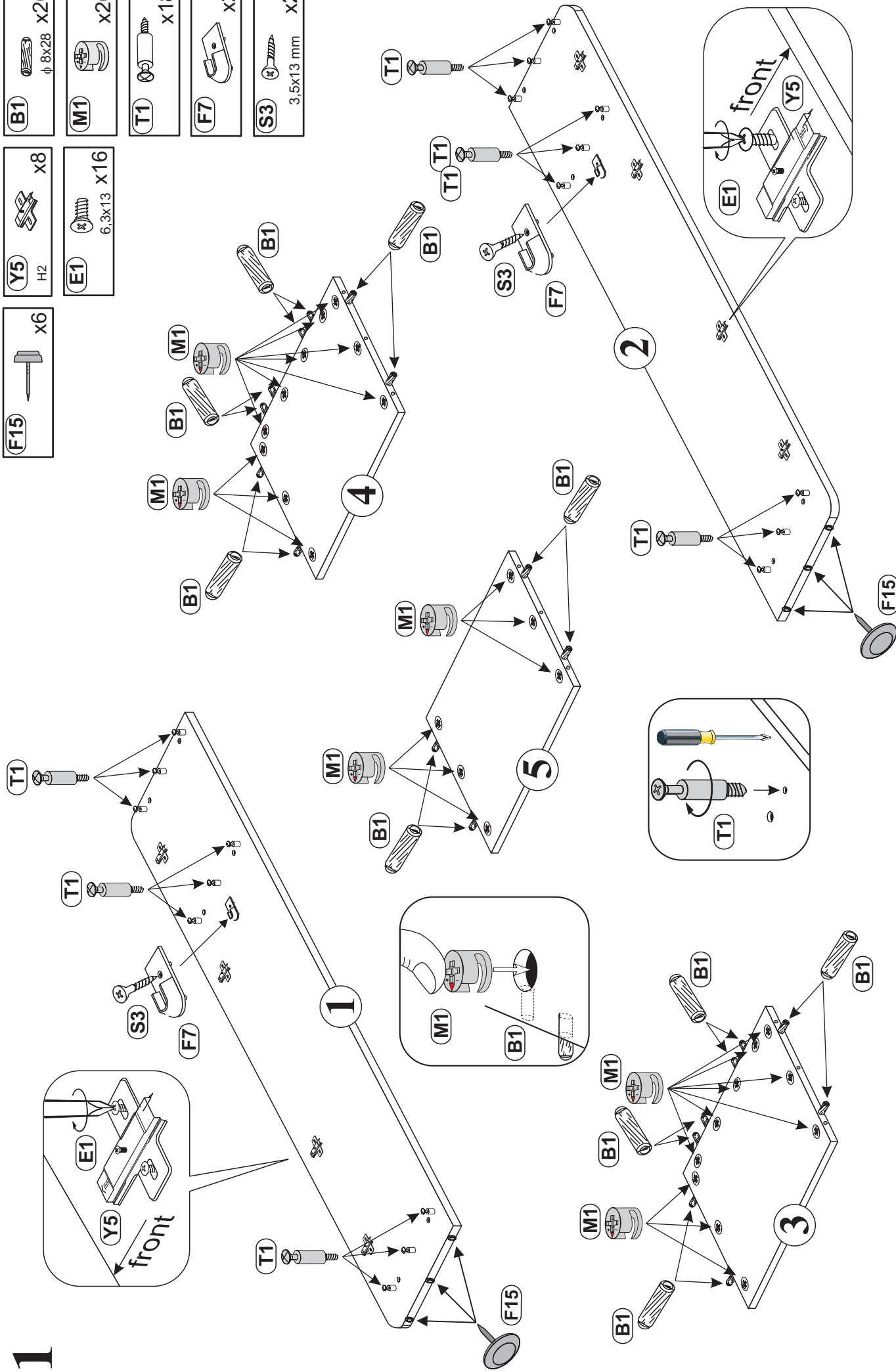
1

4

5

2

3



Modellname:
Nazwa modelu:

DOVER

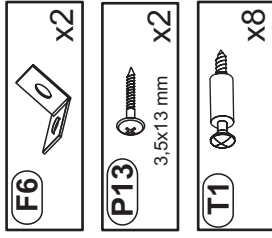
Modellreihe:
Numer modelu:

SL -- 08

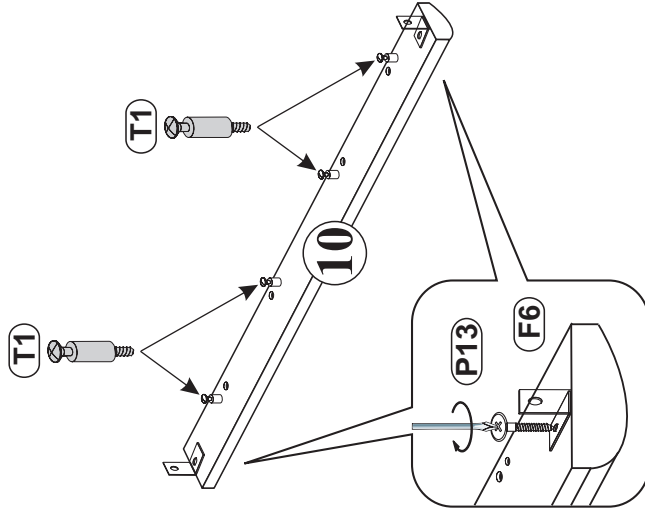
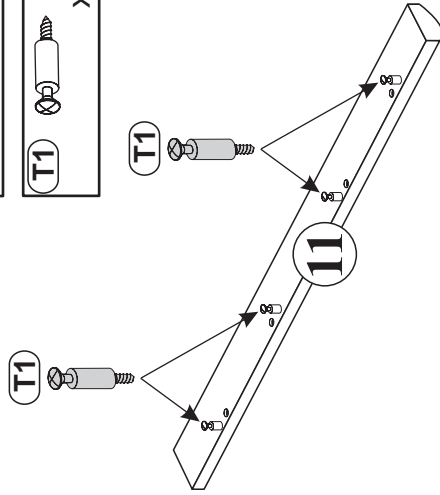
Type:
Typ:

Blatt Nr
Strona

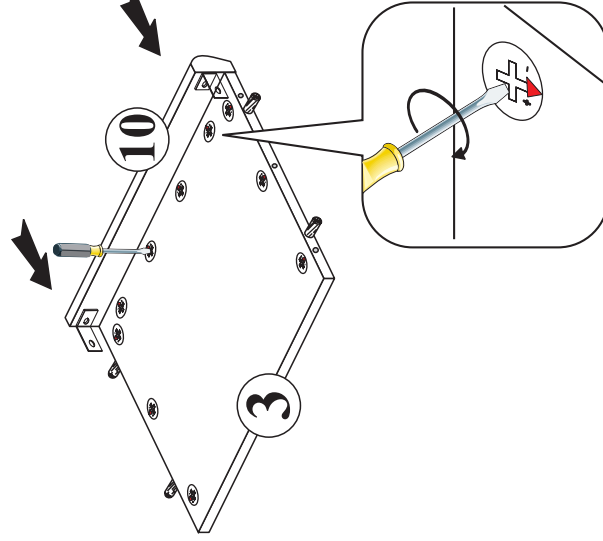
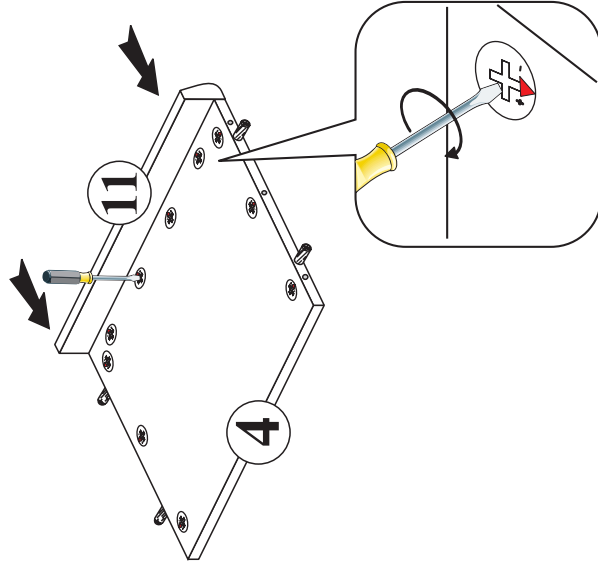
von: **3**
z: **5**



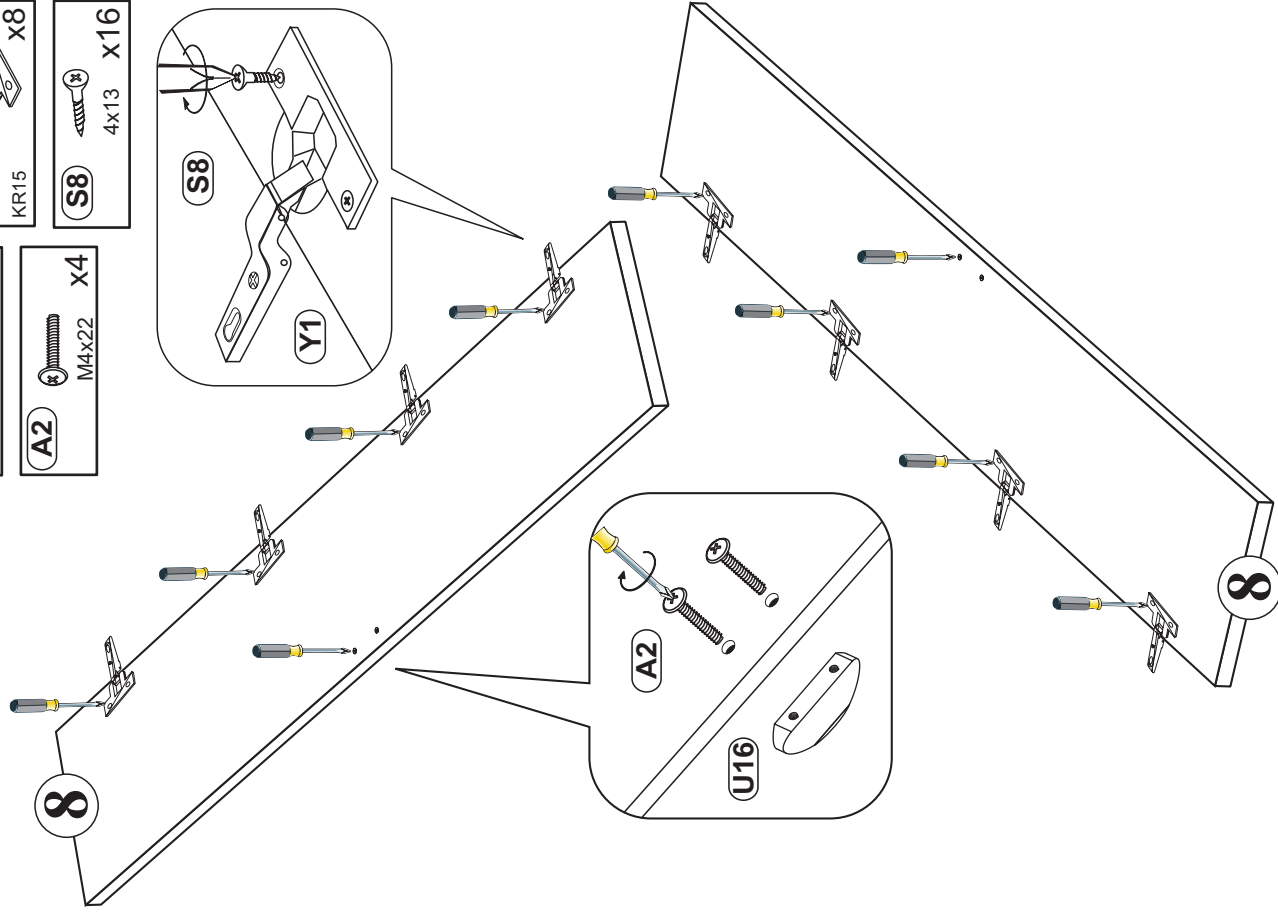
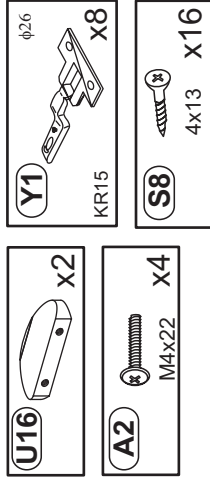
2



3



4



Modellname:
Nazwa modelu:

DOVER

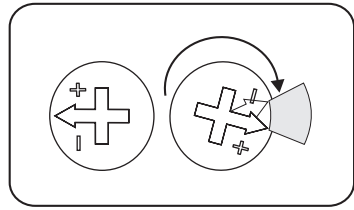
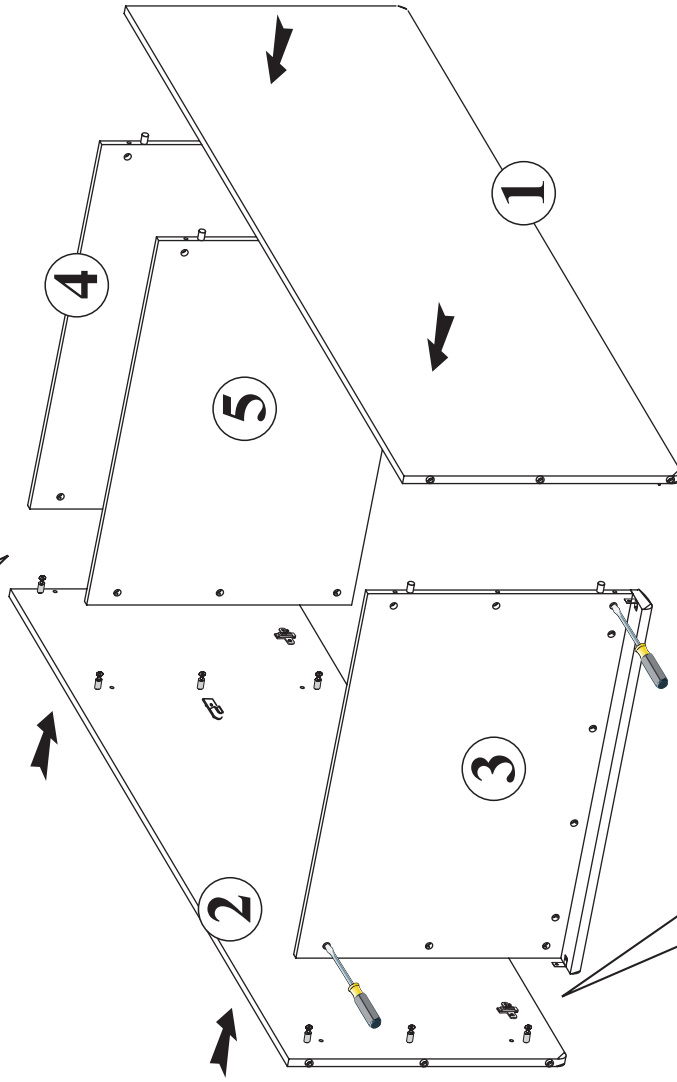
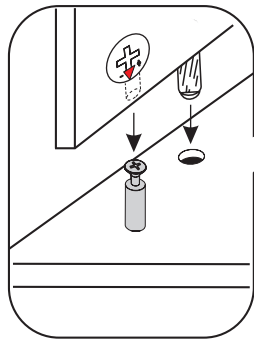
Modellreihe:
Numer modelu:

SL -- 08

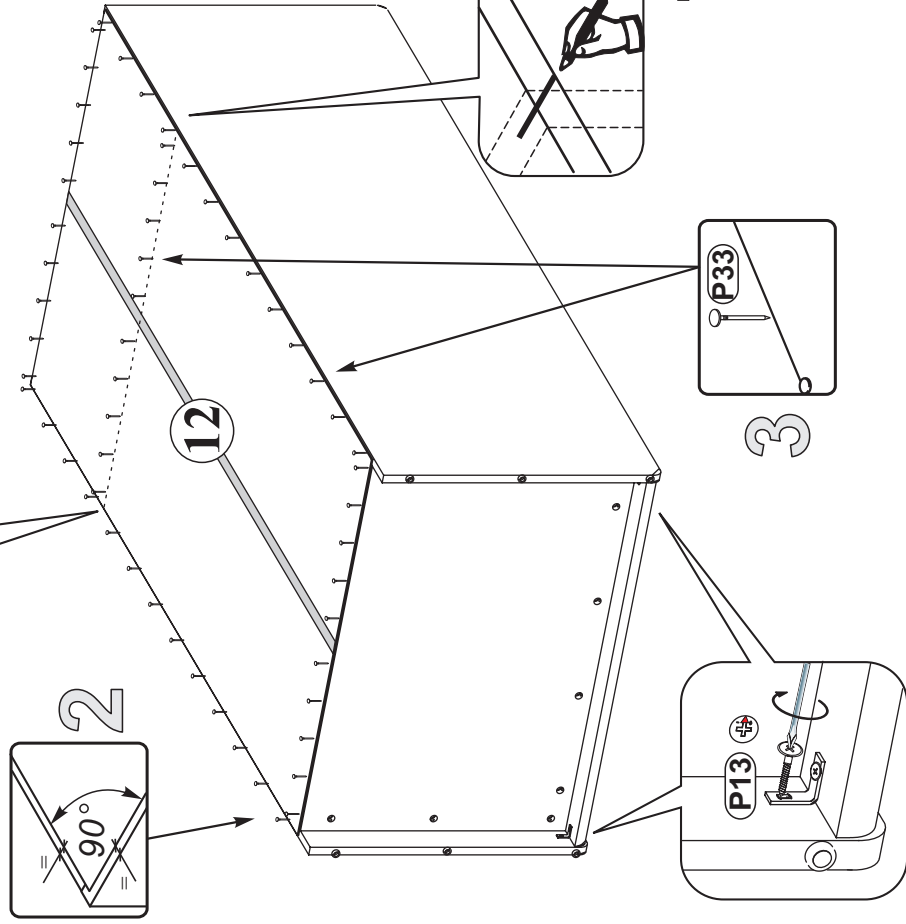
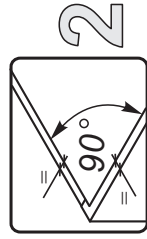
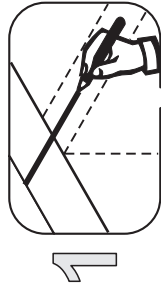
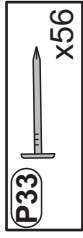
Type: **22**
Typ:

Blatt Nr **4** von: **5**
Strona z:

5



6



Modelname:
Nazwa modelu:

DOVER

Modellreihe:
Numer modelu:

SL -- 08

Type: **22**
Typ:

Blatt Nr **5** von: **5**
Strona z:

7

