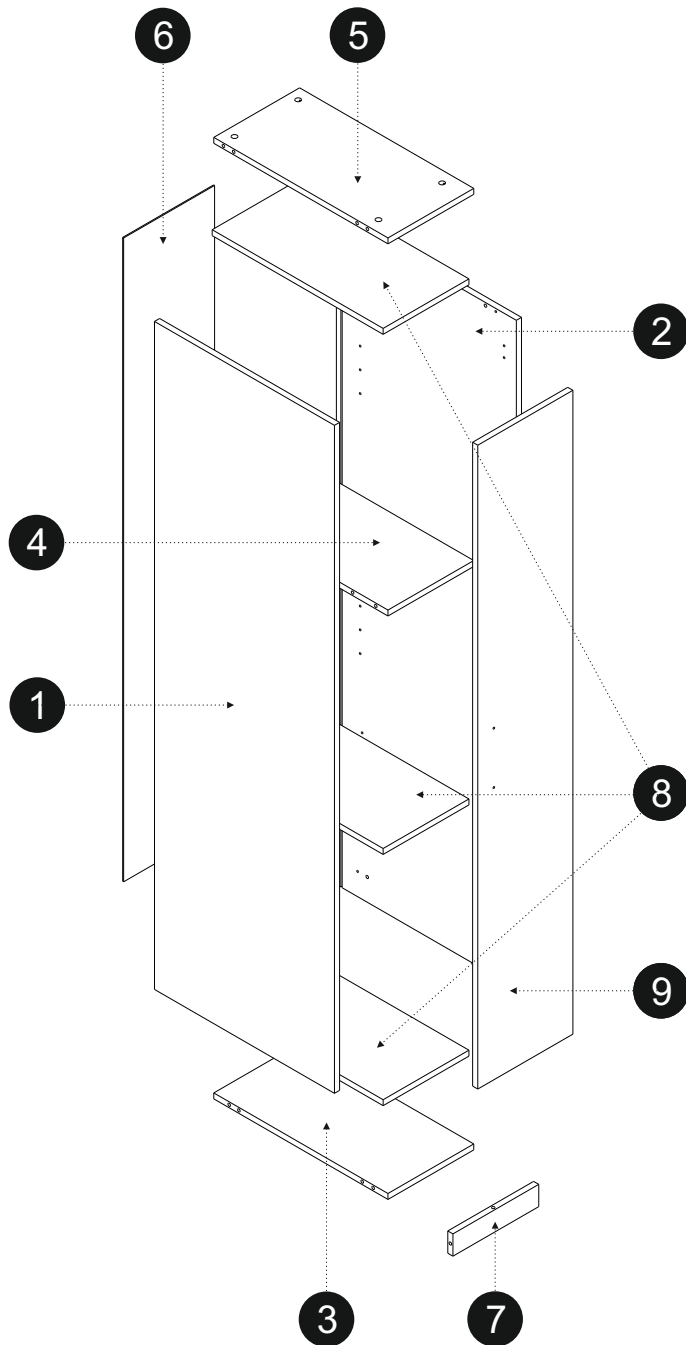


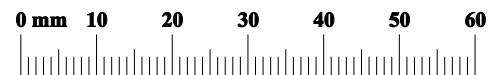
RUBIC D 30 1D



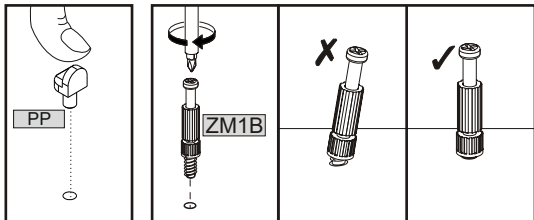
1/2				
	L [mm]	W [mm]	T [mm]	
3	542	267	16	x1
4	542	267	16	x1
5	542	267	16	x1
6	1735	283	3	x1
7	267	60	16	x1
8	532	267	16	x3
9	1735	296	16	x1

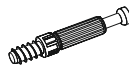

2/2				
	L [mm]	W [mm]	T [mm]	
1	1800	560	16	x1
2	1800	560	16	x1

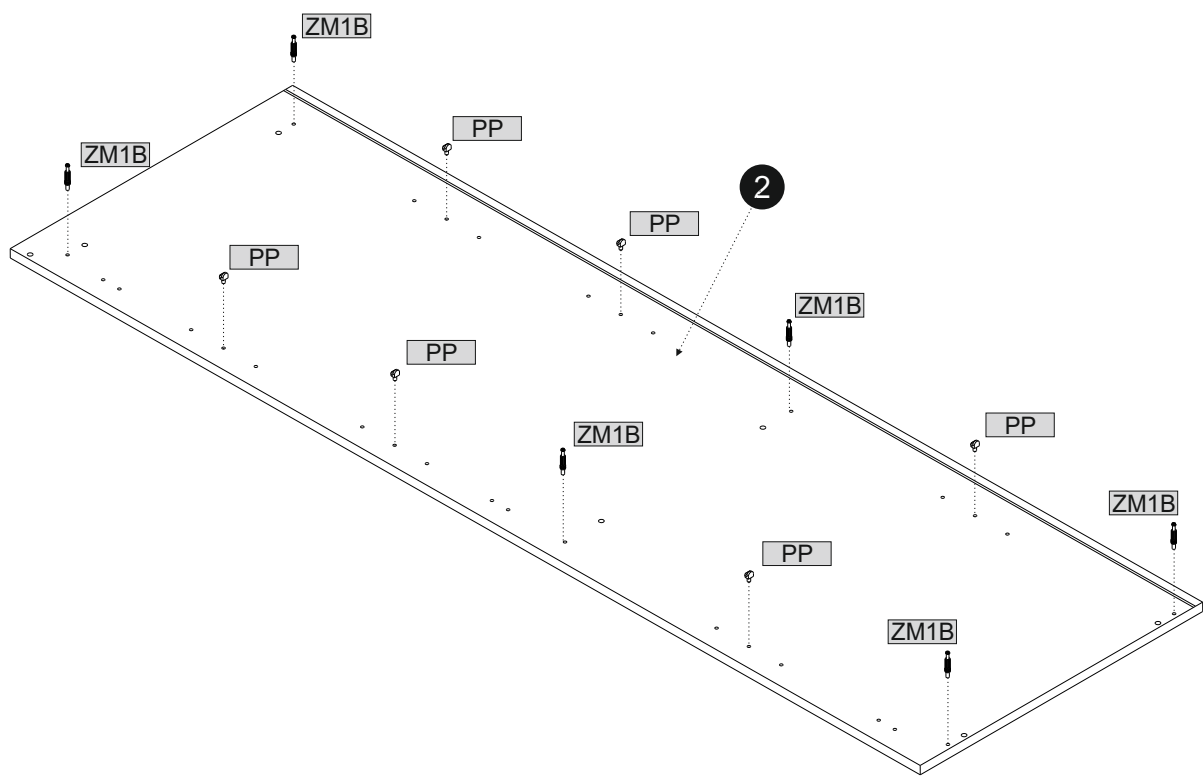
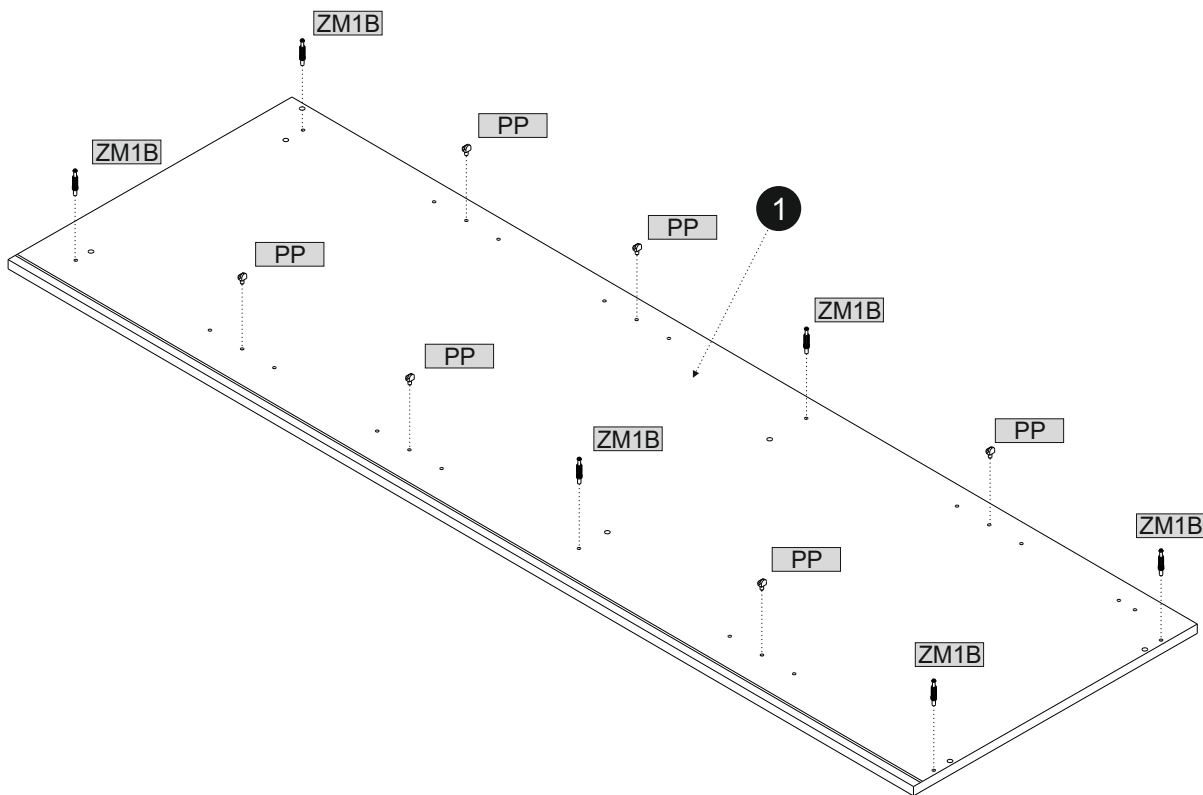
	KS1	1		KK1	1		PP	12		S1	8		SG1	4		ZM1B	12		ZM1	4		LN160	1										
		ZP	3			Z1P	3		KD1	8x35	15			KRW1	08x40	1		W4	4x13	6			WU1	4x27	2		ZM1A	12			W11	3,5x16	2
		W1	3x16																														

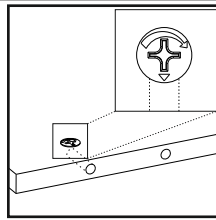
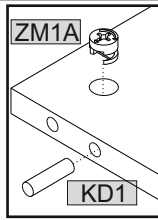
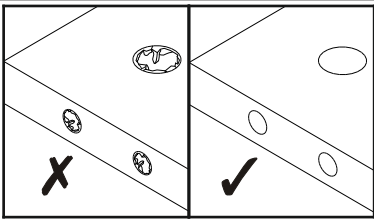


01

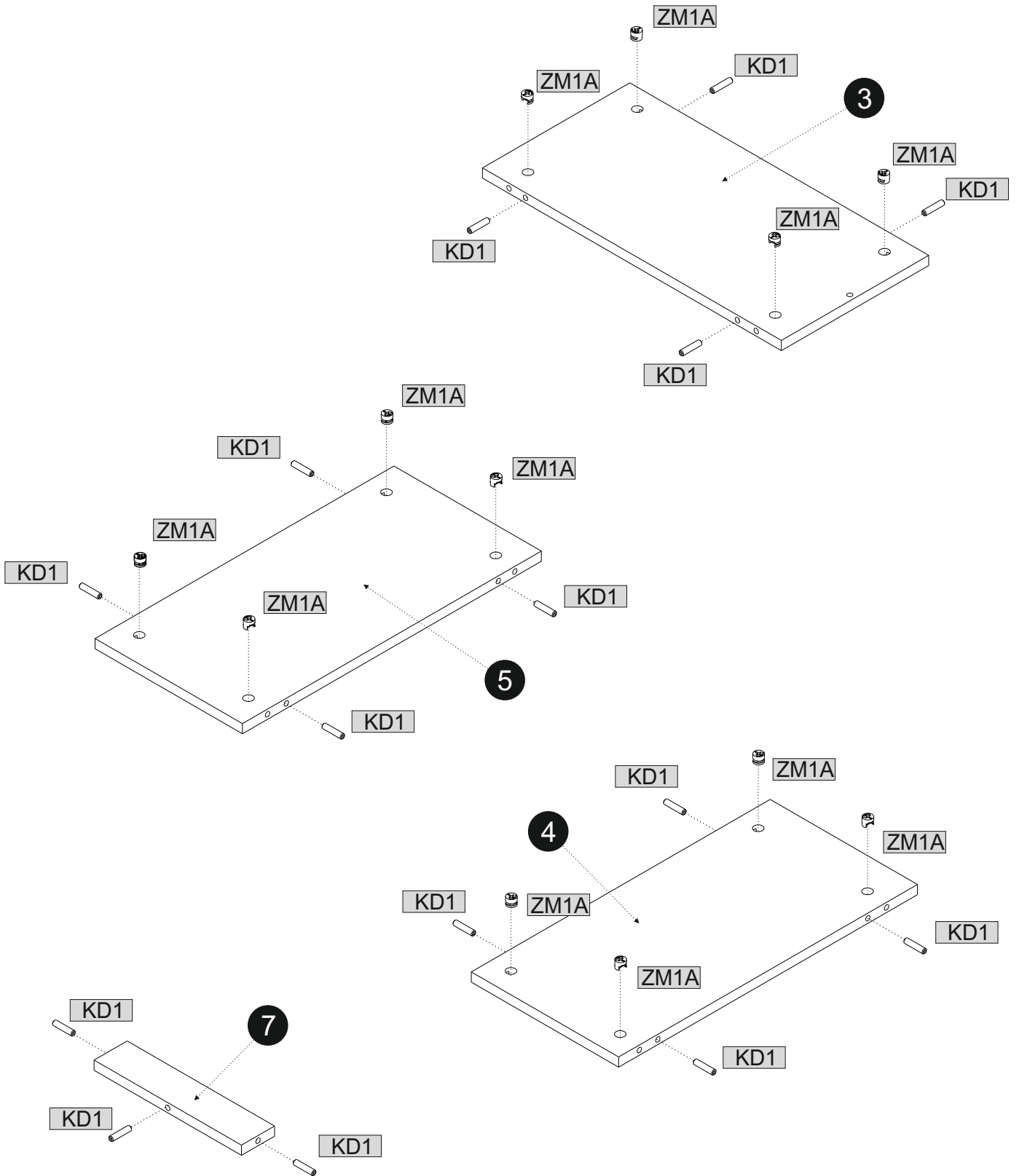


			
ZM1B	12	PP	12

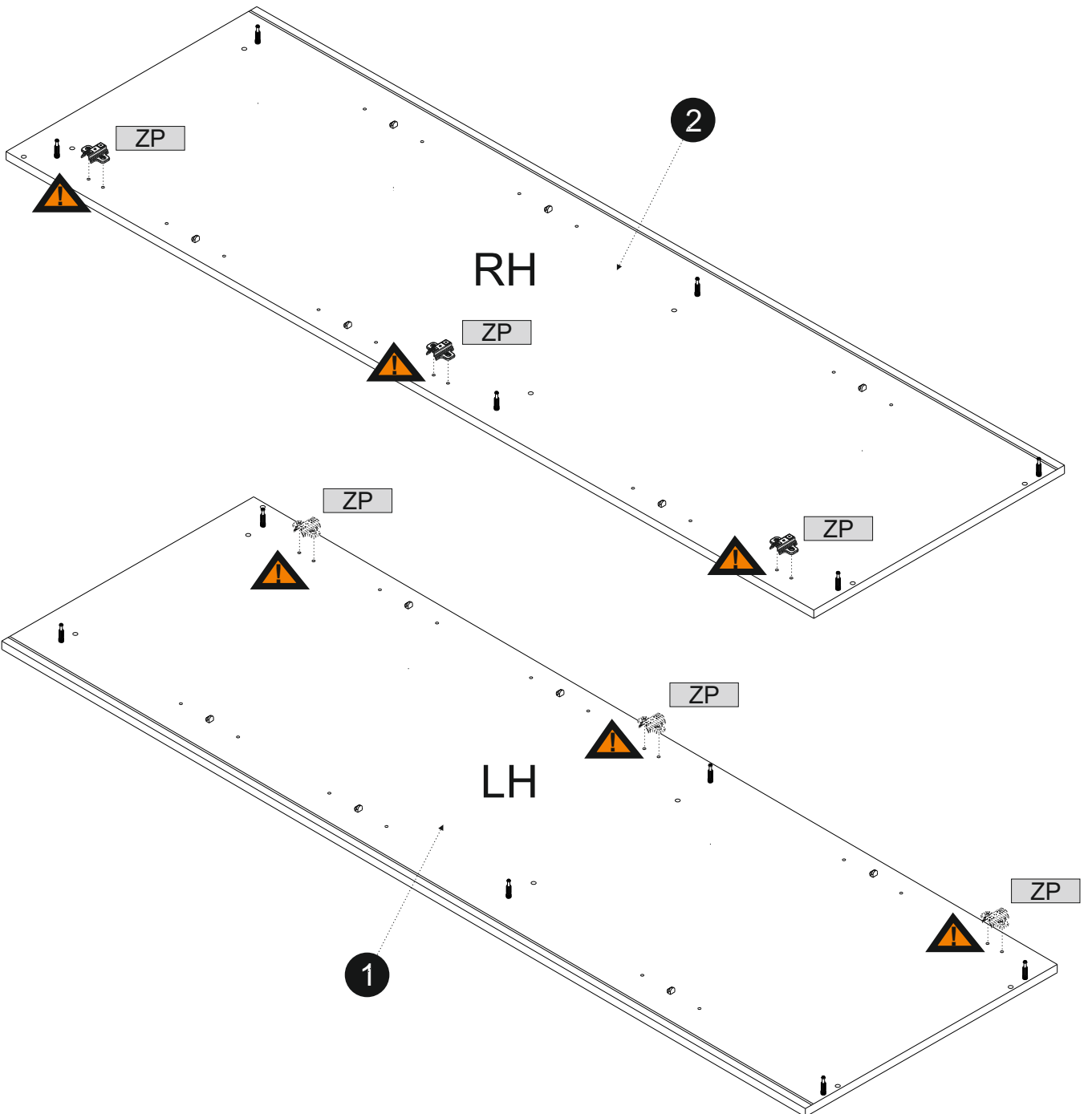
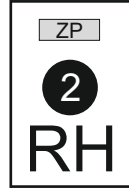
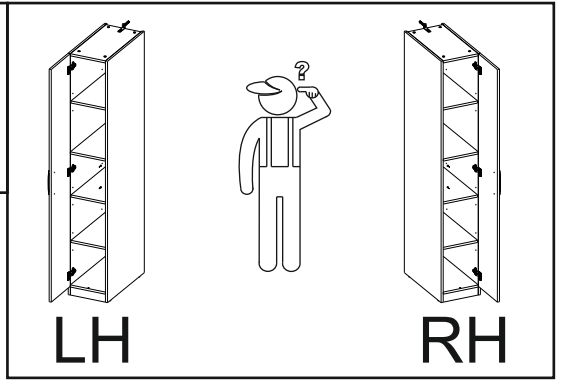
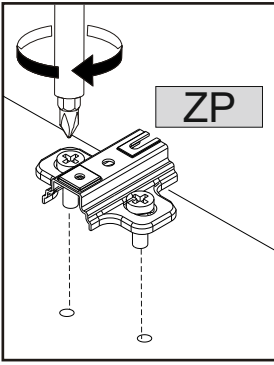
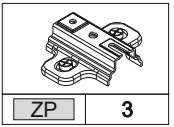
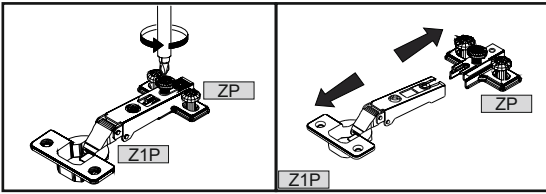


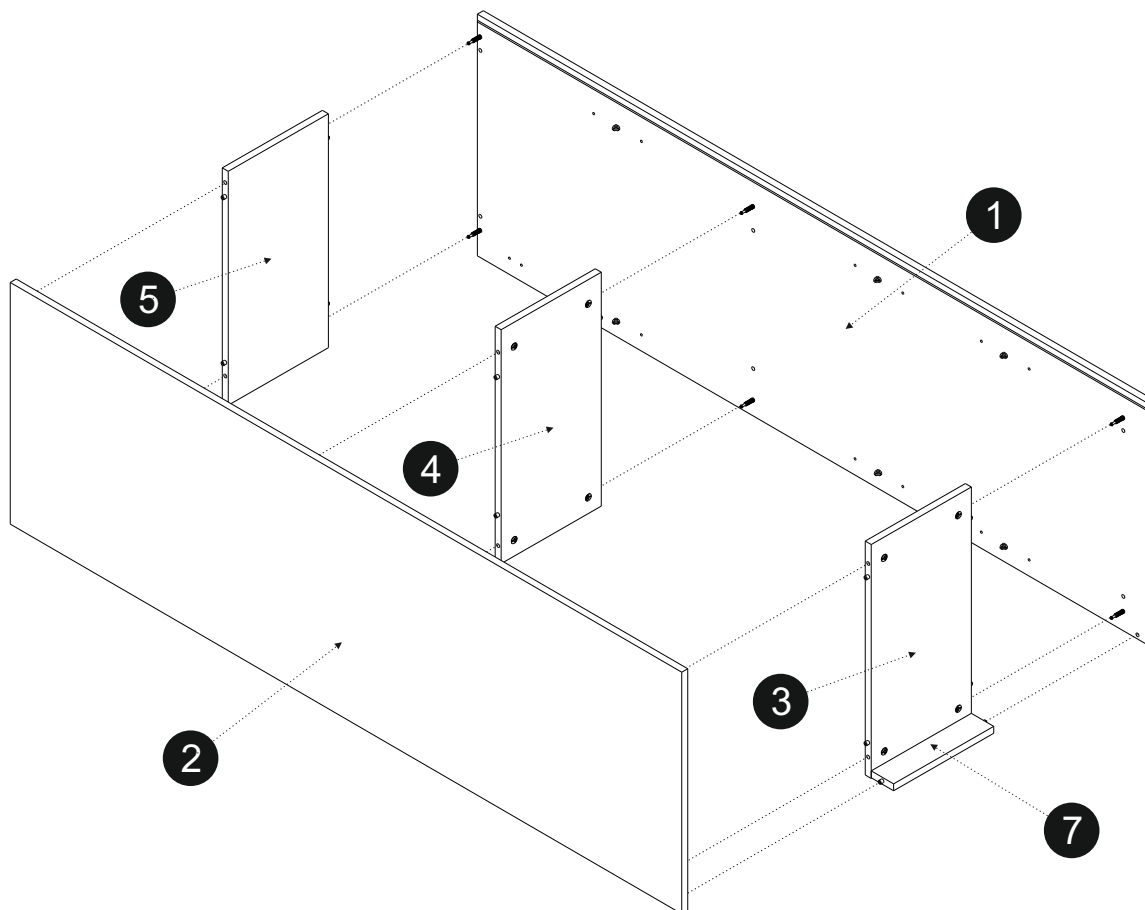
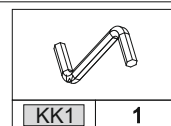
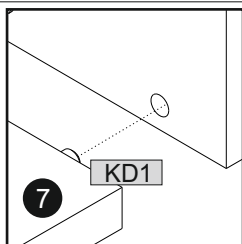
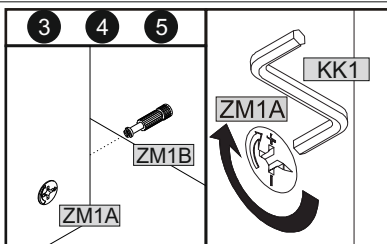
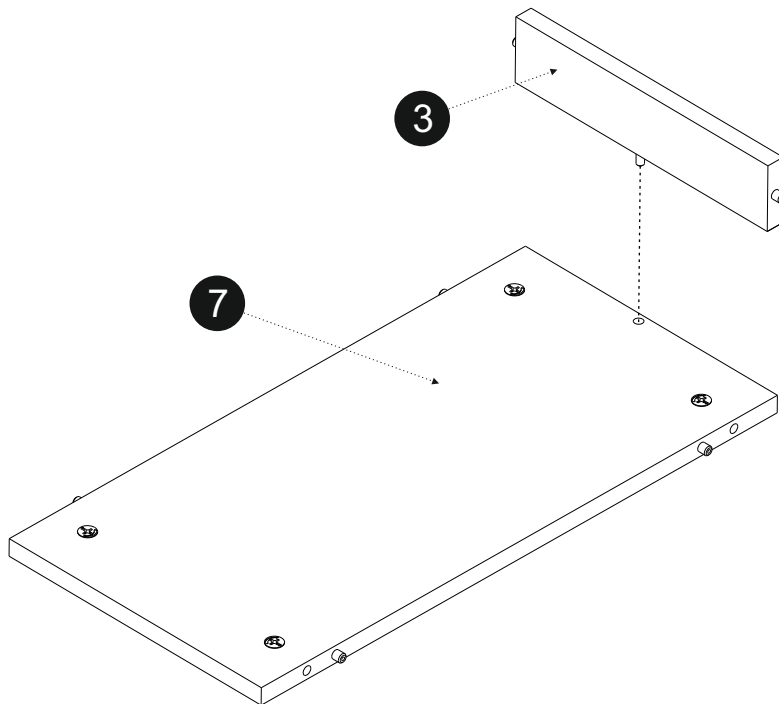


ZM1A	12	KD1	15

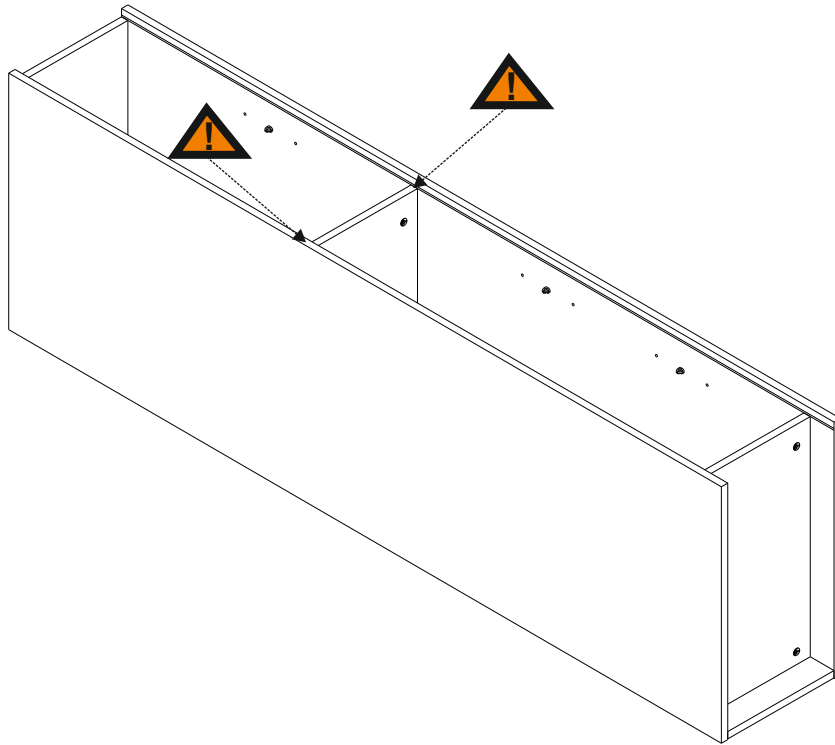
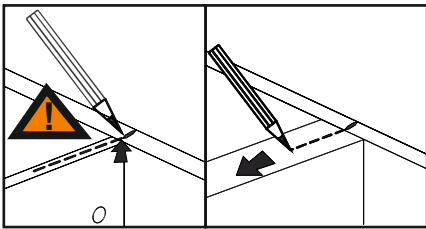


03

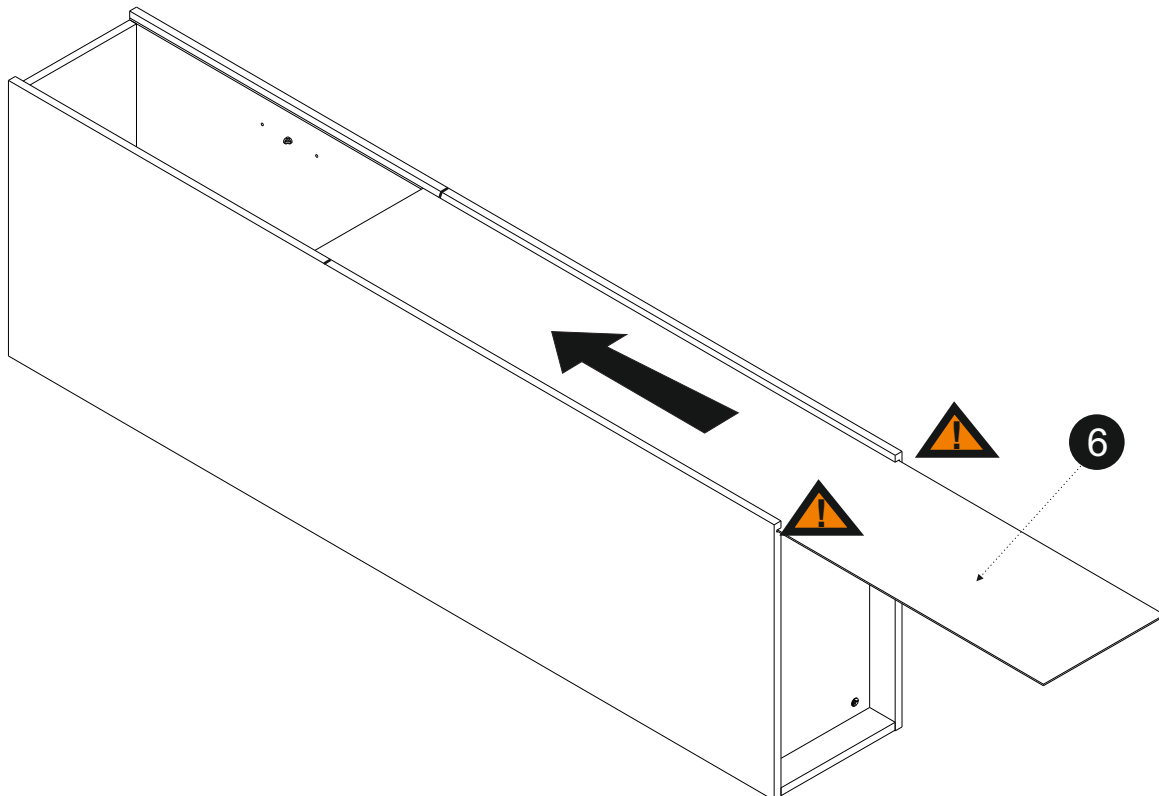
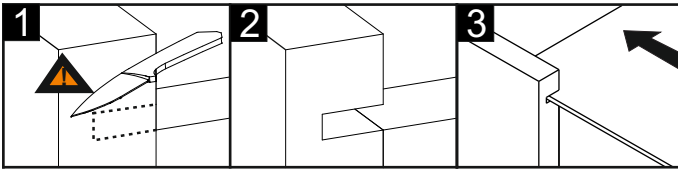




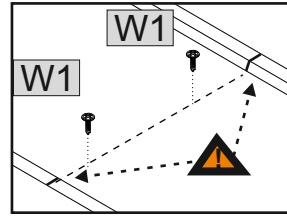
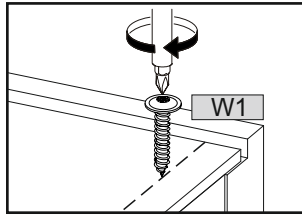
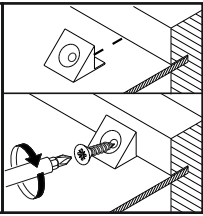
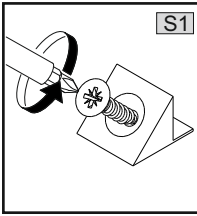
06





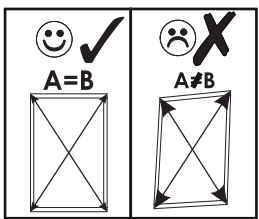
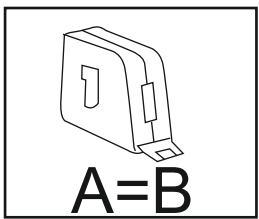
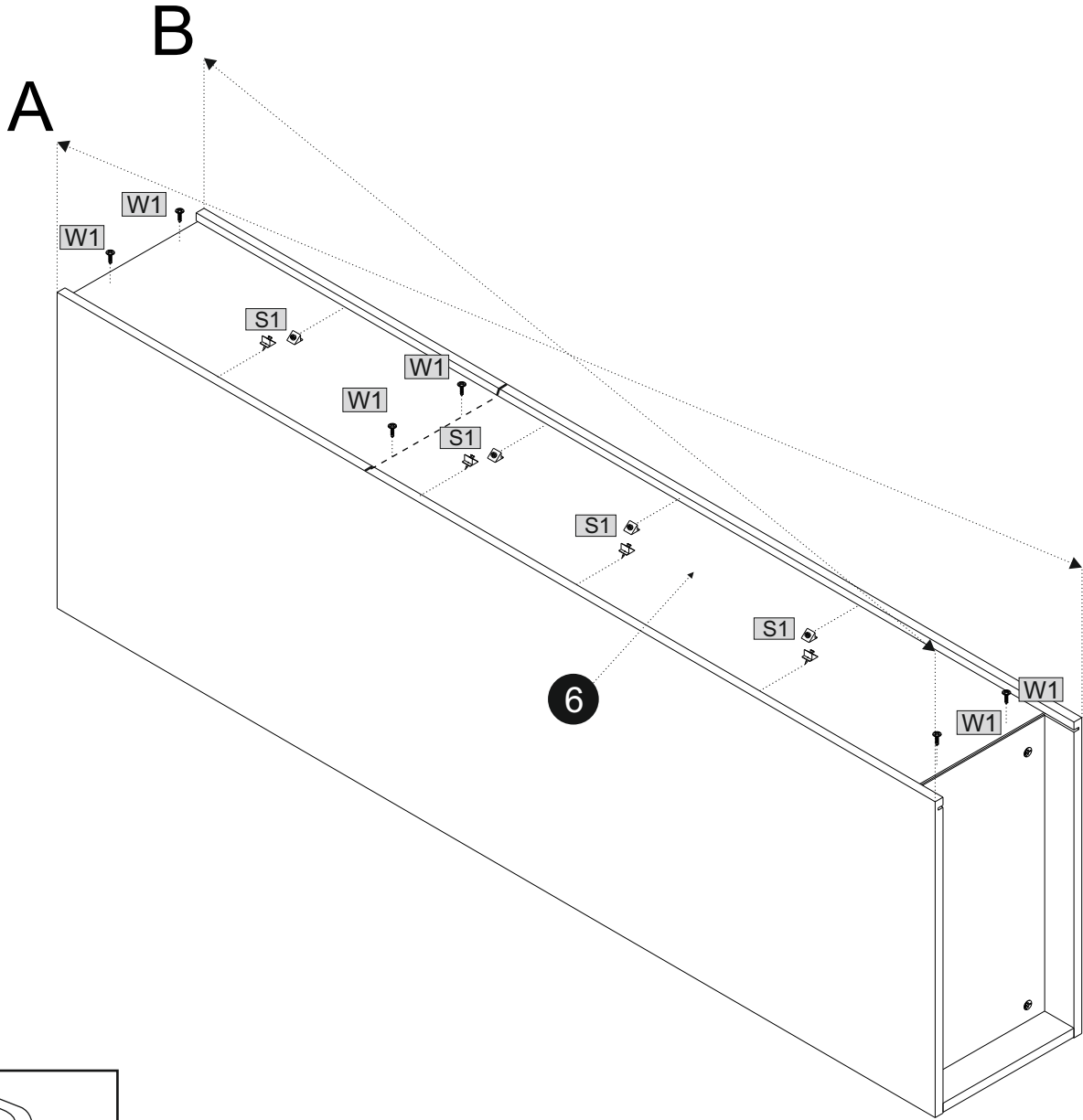
07



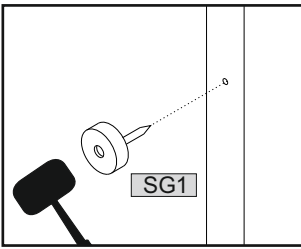
08



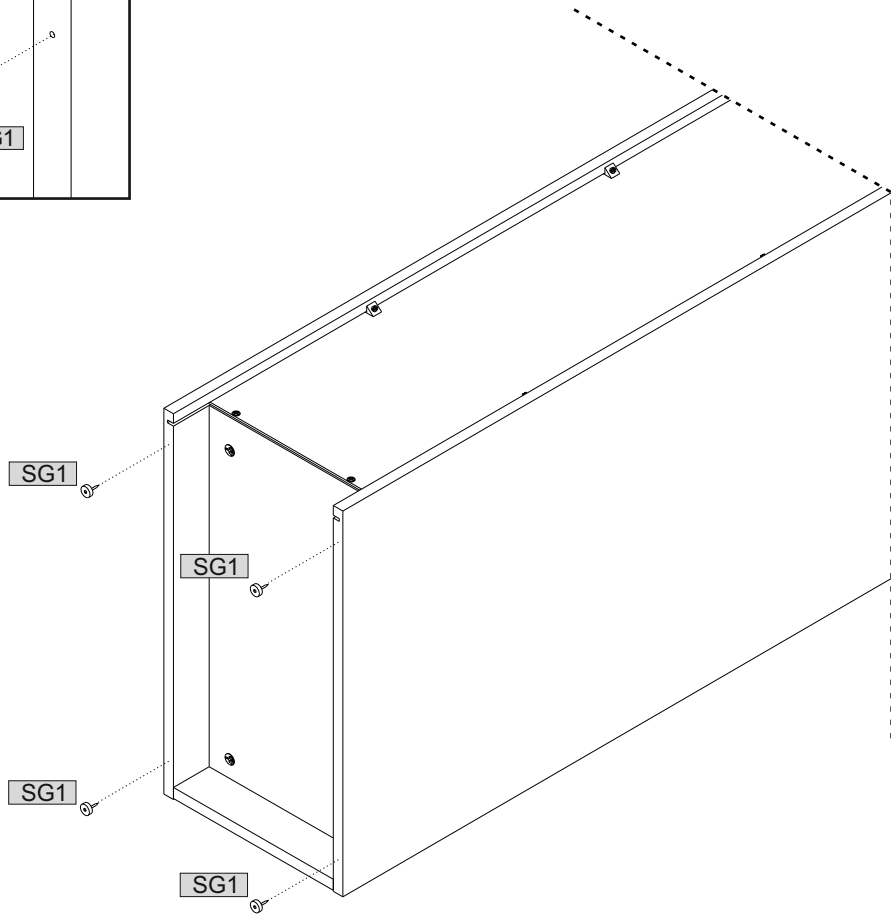
	3x16		
W1	6	S1	8



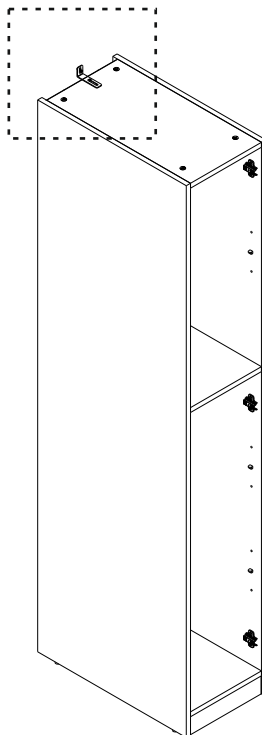
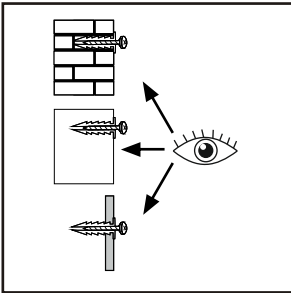
09



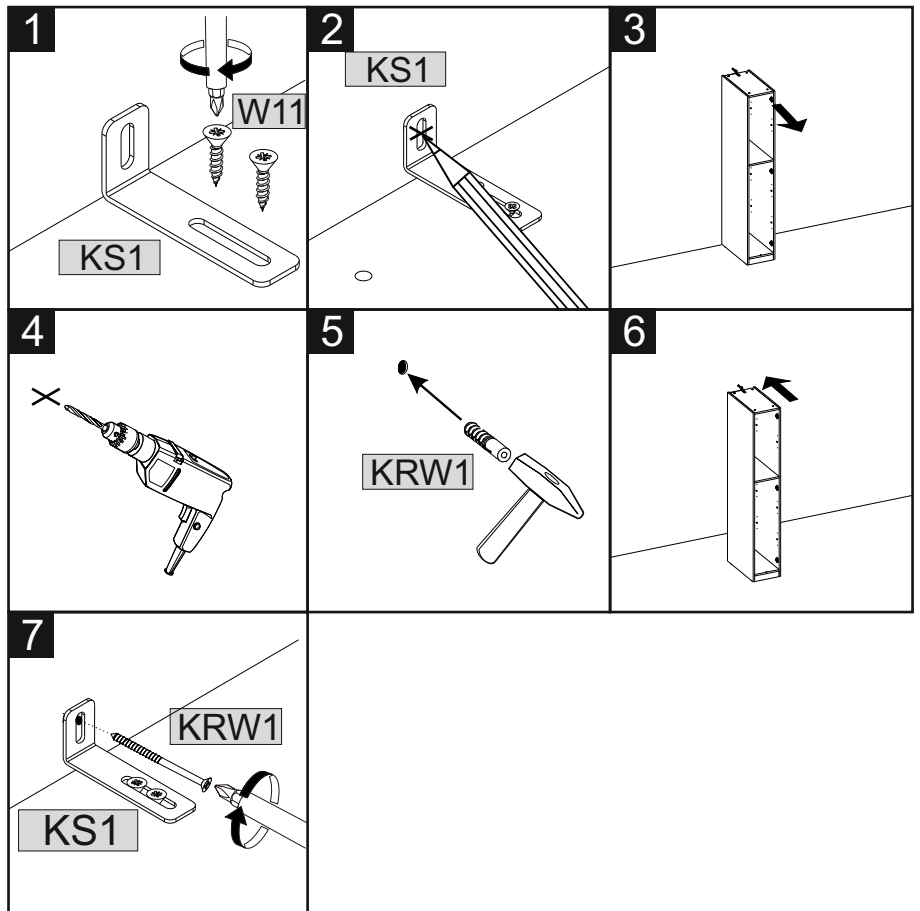
SG1	4



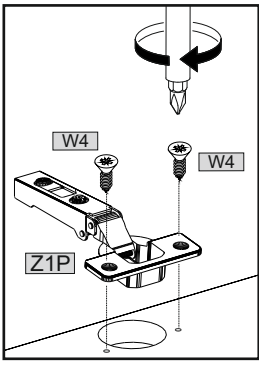
10





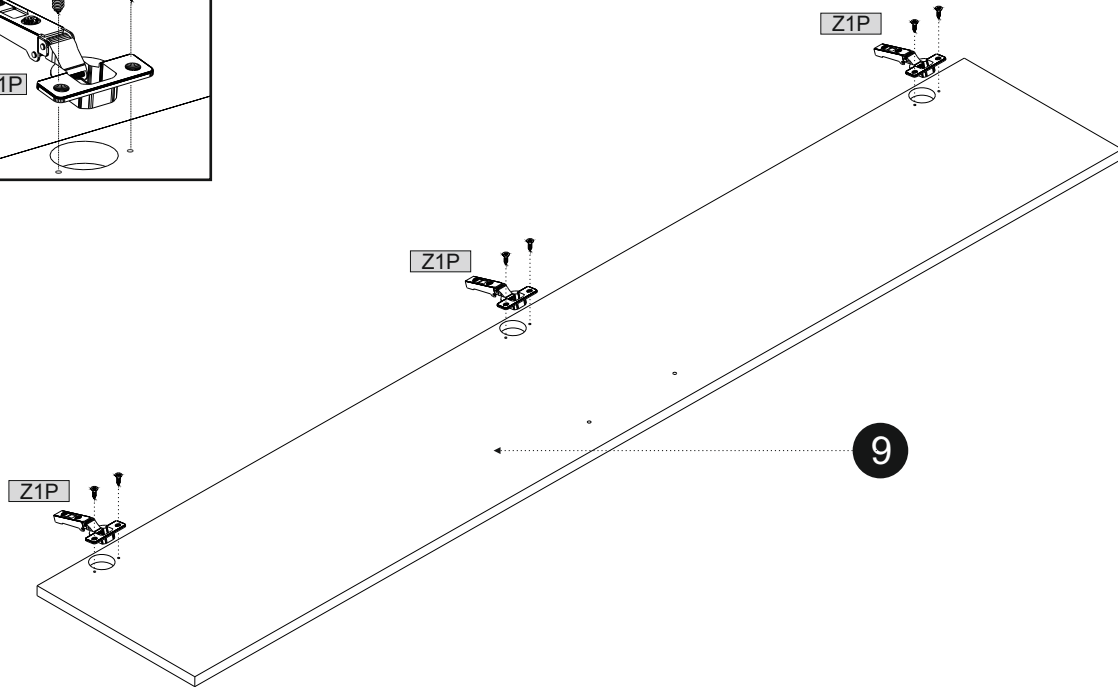
KS1	1	KRW1	1	W11	2
		08x40		3,5x16	



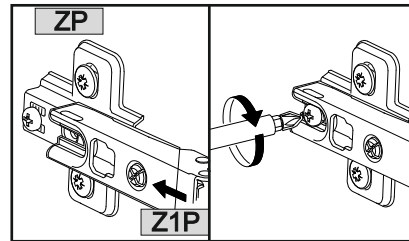
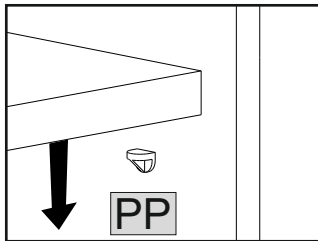
11



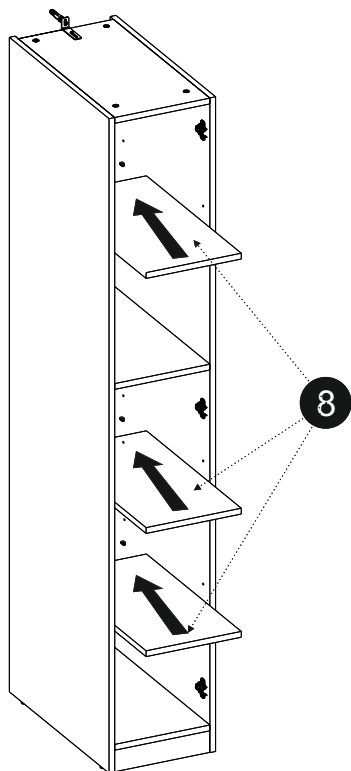
	4x13		
W4	6	Z1P	3



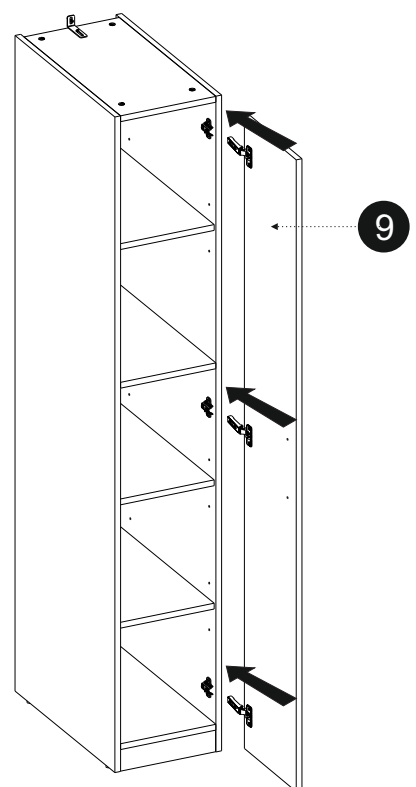
12



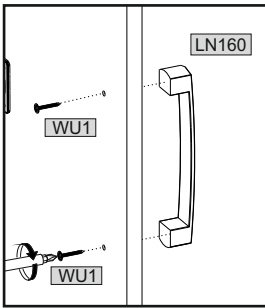
1



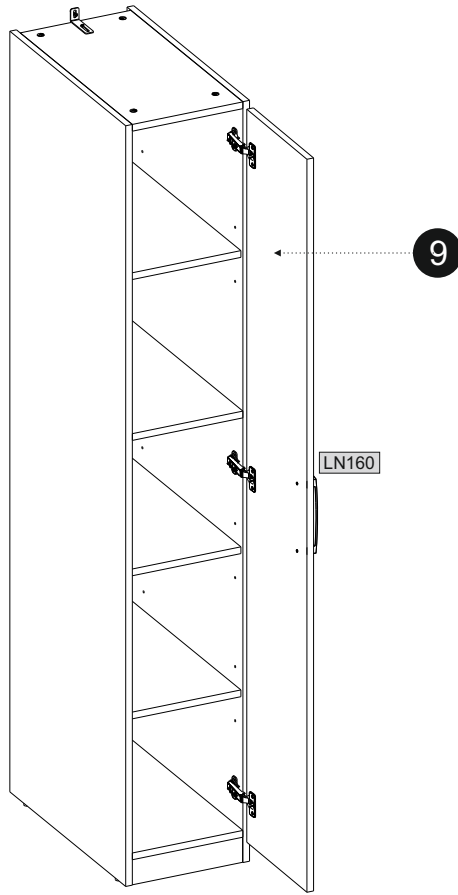
2



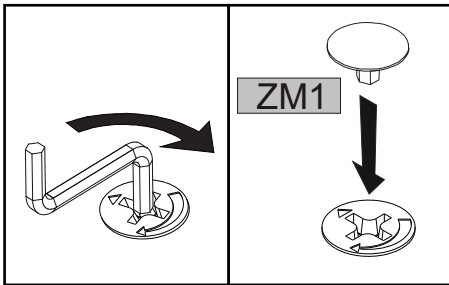
13



	4x27		
WU1	2	LN160	1



14



KK1	1	ZM1	4

