



**Pflegehinweis!**

Bitte nur mit einem Staubtuch oder einem feuchten Lappen reinigen. **KEINE** scheuernde Putzmittel verwenden !

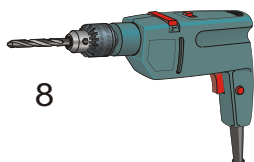
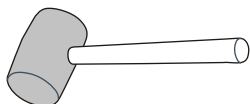
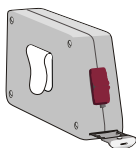
**Wskazówka dotycząca pielęgnacji!**

Proszę czyścić tylko suchą lub lekko wilgotną szmatką do kurzu. Nie używać żadnych środków szorstkich !

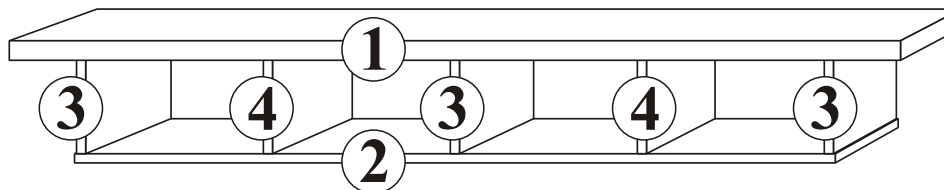
**MONTAGEANLEITUNG**  
**INSTRUKCJA MONTAŻOWA**



**1 Person**  
**1 Osoba**



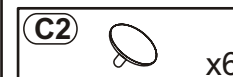
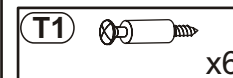
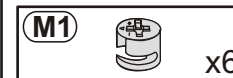
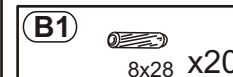
8



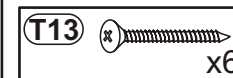
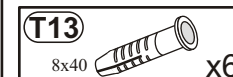
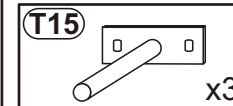
Max. zulässige Belastungen von Einlegeböden in kg:  
 Maksymalne obciążenie półek w kg:

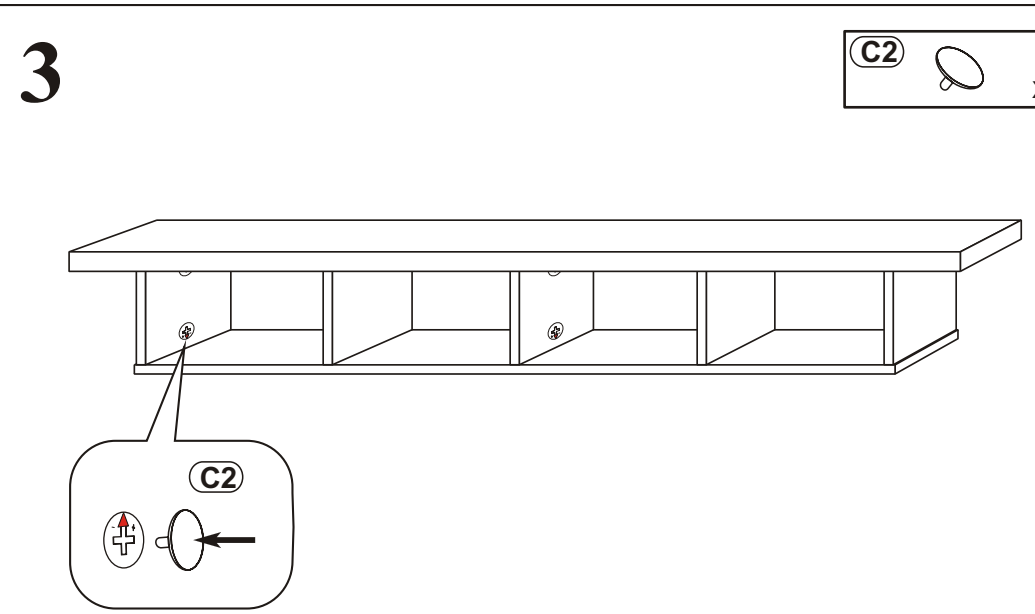
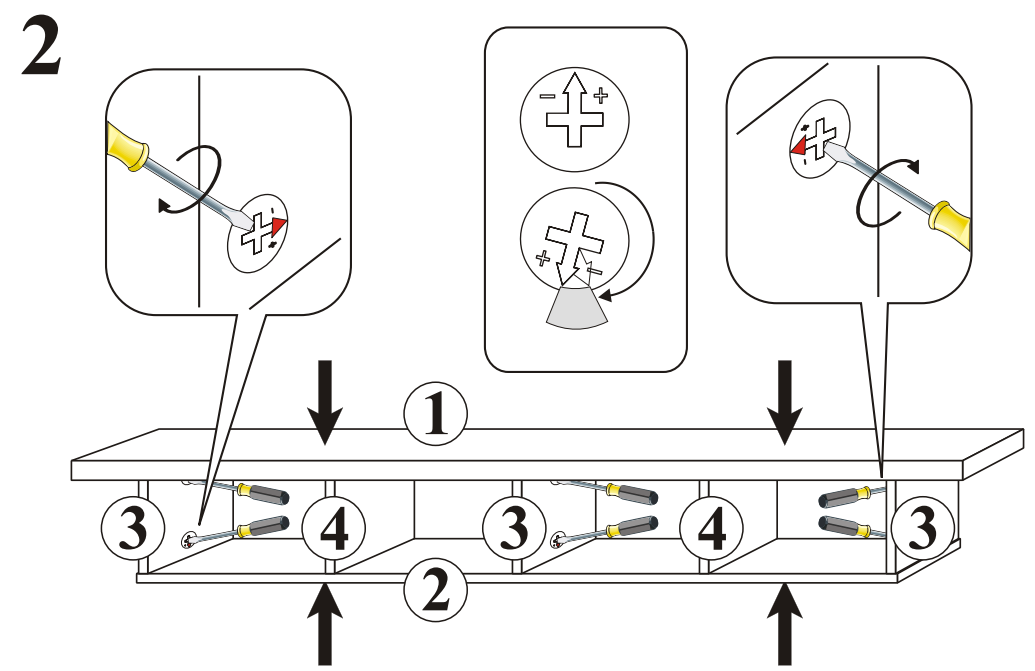
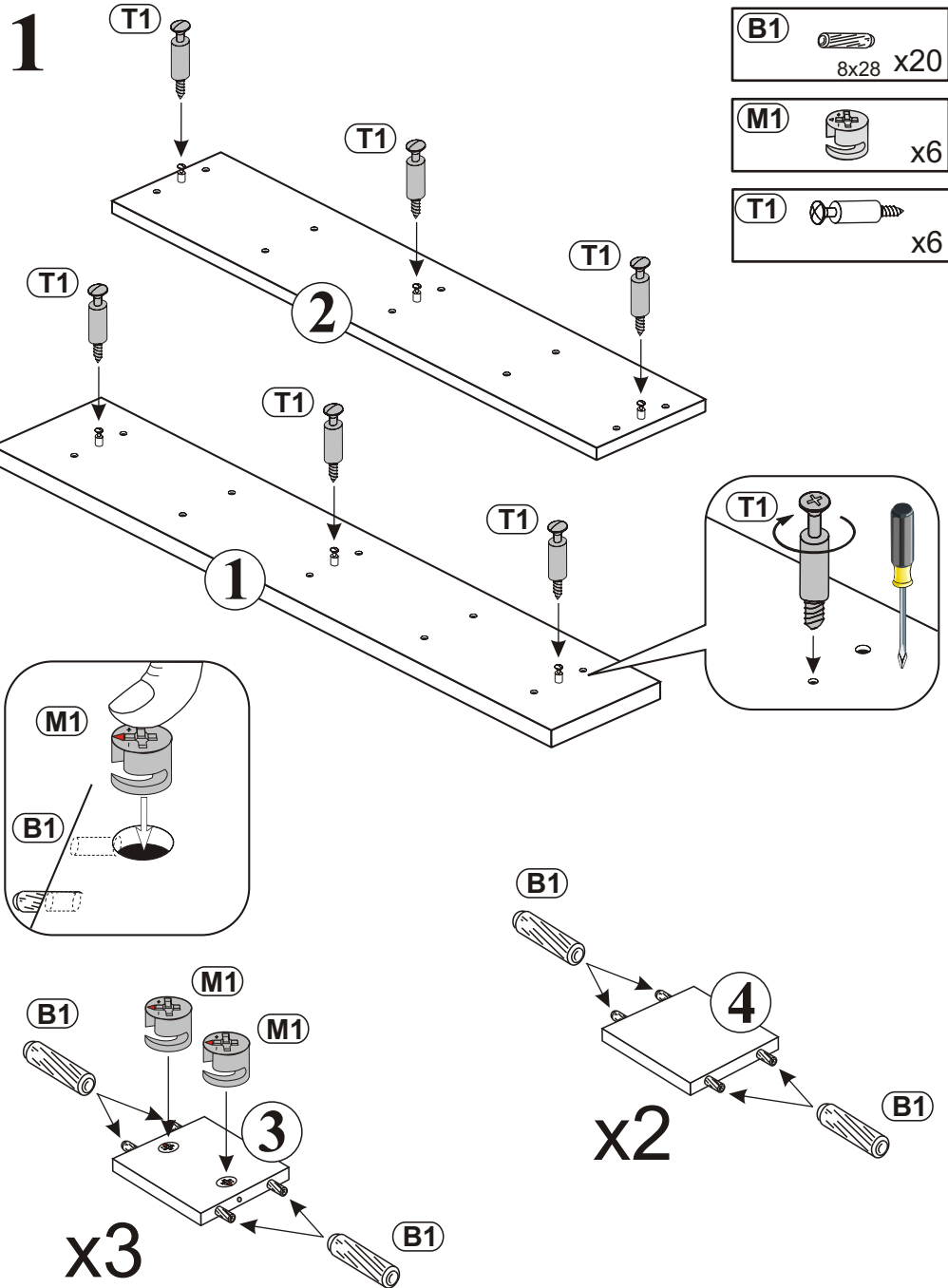
Länge/Dł. mm	Stärke/Gr. Spanplatte/Płyta		
	15	18	22
0<400			
401<600	40	40	40
601<800	24		
801<1000	15	30	

**NR 1**

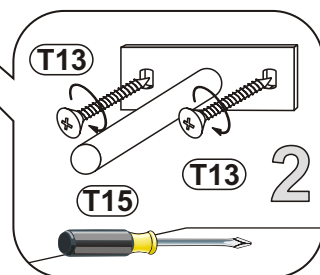
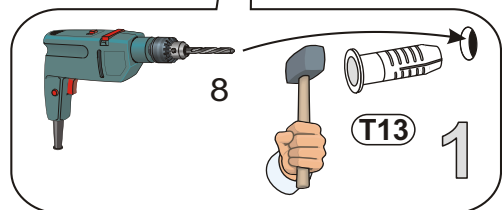
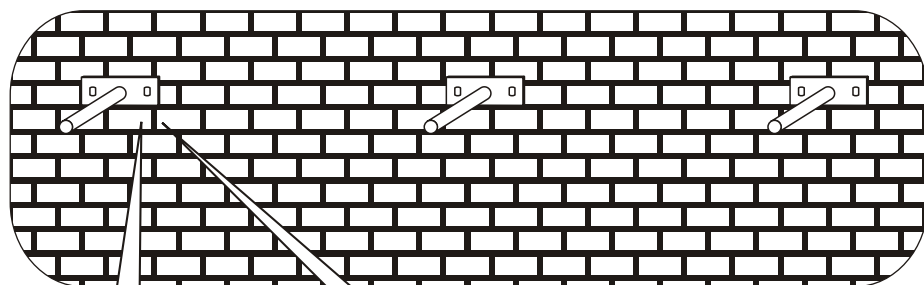
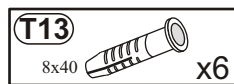
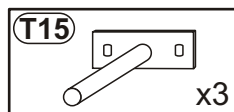
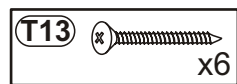


**NR 2**





**4**



**5**

